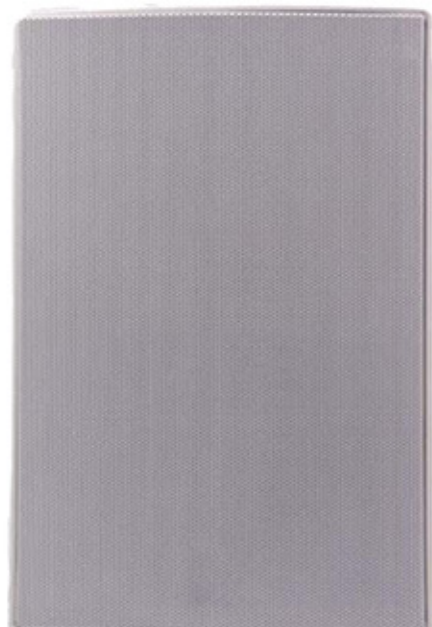


# AN-SP11 Aristel 15W IP Speaker Wall Mounted



#### Crystal Clear Audio

With support for multiple audio formats in full-range audio from 80Hz to 20kHz.



#### Multimedia Uploading

Pre-set alarms, school bells and uploading options for personalised sounds.



#### Scheduled Broadcasting

Play pre-set audio at specific times with adjustable volume.



#### Multicasting

Supports multicasting options.



#### Easy-to-use software

It is straightforward to change settings and calibrate to your specifications.



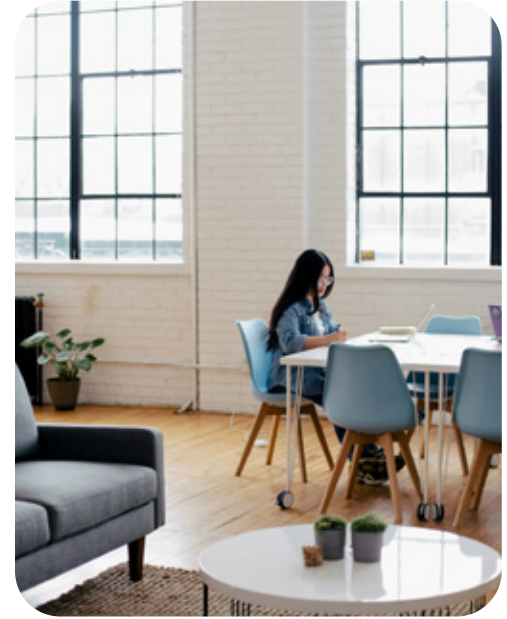
## Application scenarios



Schools



Uni campuses



Enterprises

## Crystal-clear sound with support for multiple audio formats.

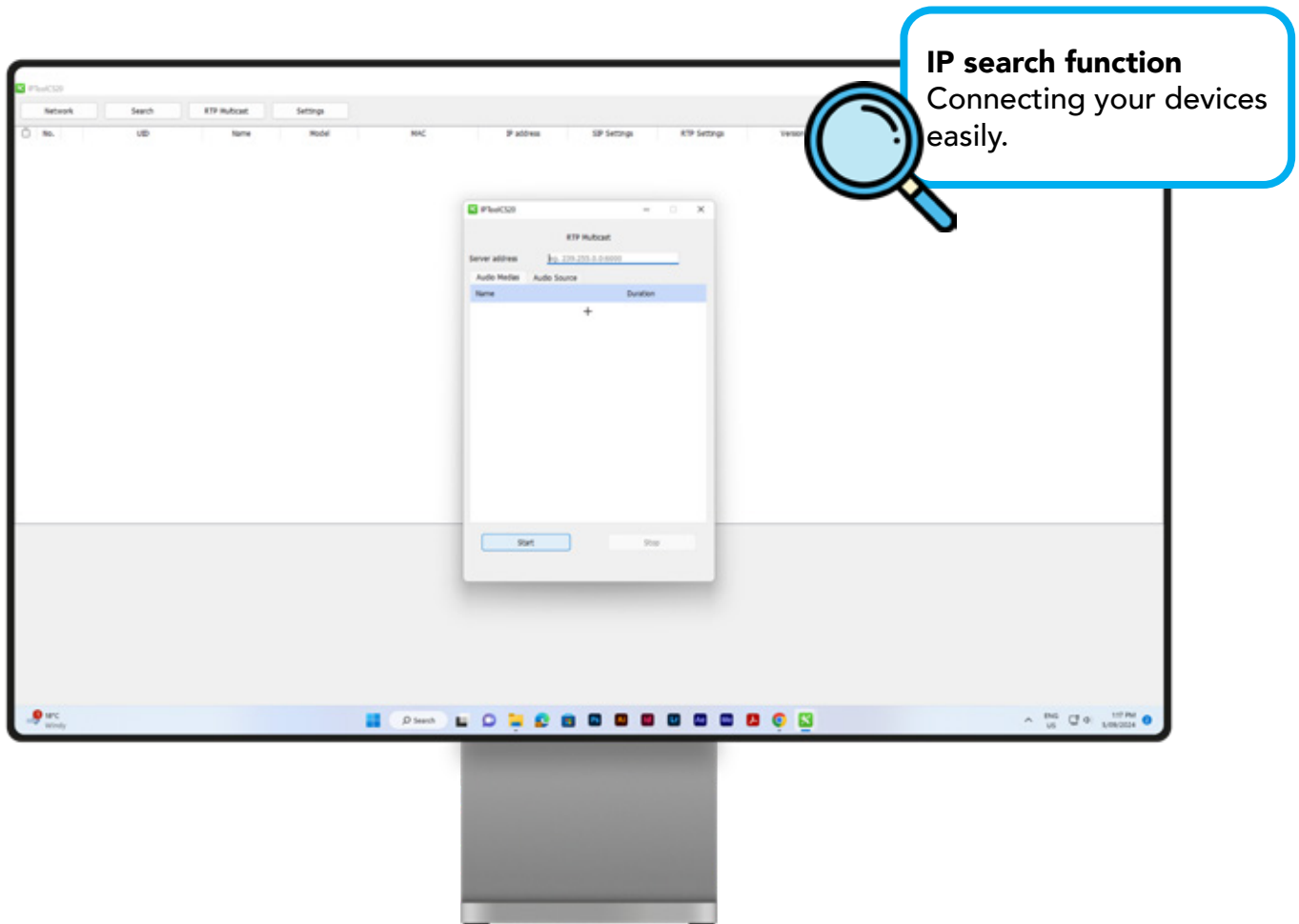


This **IP55** waterproof product offers reliable protection against water, ensuring durability in outdoor or wet environments.



## Product Description

The IP Wall Speaker can be installed horizontally or vertically, which makes it easy to mount on the exterior of a building, with three way mounting. It's ideal for installation in schools, offices, stores and hospitals. It can be applied to play background music, make announcements, and provide security or fire alarm linkage. The standard SIP protocol allows easy integration with other SIP devices, and the standard ONVIF protocol enables easy integration with most brands of IP cameras VMS/NVR in the market.



## Web Management Software Solutions

Setup your AN-SP11 device/s through the IPTool to customise and connect the system.

### Highlights

- IP55 Waterproof product.
- Powerful volume with a max output of 101dB.
- Three way mounting.
- Supports multiple connections with SIP, ONVIF, HTTP, and more.
- Handles 2 VoIP accounts for direct IP calls and multicast.
- 15W built-in amplifier for robust and clear sound.
- Powered by PoE or 12V DC for flexible installation.
- Wall-mounted for easy setup.
- Compact and lightweight at 3 kg, it is ideal for various spaces.



## Specification

<b>Audio</b>	
Codec	OPUS 48K, MP3 44.1 kHz, G.722 ADPCM 16 kHz, G.711 PCMU 8 kHz, G.711 PCMA 8kHz
Speaker	
Max SPL	101dB
Frequency Response	80Hz ~ 20KHz
<b>Network</b>	
Security	Password protection, IP address filtering, Digest authentication, User access log
Network Protocol	SIP, ONVIF, HTTP, IPv4, DHCP, RTSP, RTP, RTCP, TCP, UDP, ARP, FTP, TFTP, NFS, NTP
Network Interface	10/100 Base-TX, RJ45
VoIP	2 SIP Accounts SIP Direct IP Call RTP Multicast
<b>Amplifier</b>	
Amplifier Description	Built-in 15W Amplifier
<b>General</b>	
Material	ABS (IP55 water-proof)
Rate Power	15W
Power Supply	PoE or DC 12V
Installation	Wall Mounted
Dimensions	296 x 196 x 157 mm
Weight	3 KG
Languages	English
Warranty	1 Year
Package Includes	IP Speaker Wall Mounted Speaker User Manual

## ONVIF & SIP Integration Compatibility

Interoperable with IP camera VMS systems via ONVIF, Aristel Networks IP audio devices enable functions such as paging, emergency notifications, and live announcements.

