

Specification for AN-SP11

Audio	
Codec	OPUS 48K, MP3 44.1 kHz, G.722 ADPCM 16 kHz, G.711 PCMU 8 kHz, G.711 PCMA 8kHz
Speaker	
Max SPL	101dB
Frequency Response	80Hz ~ 20KHz
Network	
Security	Password protection, IP address filtering, Digest authentication, User access log
Network Protocol	SIP, ONVIF, HTTP, IPv4, DHCP, RTSP, RTP, RTCP, TCP, UDP, ARP, FTP, TFTP, NFS, NTP
Network Interface	10/100 Base-TX, RJ45
VoIP	2 SIP Accounts SIP Direct IP Call RTP Multicast
Amplifier	
Amplifier Description	Built-in 15W Amplifier
General	
Material	ABS (IP55 waterproof)
Rate Power	15W
Power Supply	PoE or DC 12V
Installation	Wall Mounted
Dimensions	296 x 196 x 157 mm
Weight	3 KG
Languages	English
Warranty	1 year
Package Includes	IP Speaker Wall Mounted Speaker User Manual

Specification for AN-171mc


Audio	
Codec	OPUS 48 kHz, MP3 44.1 kHz, G.722 ADPCM 16 kHz, G.711 PCMU 8 kHz, G.711 PCMA 8 kHz
Speaker	
Max SPL	113dB
Frequency Response	300Hz ~ 8KHz
Network	
Security	Password protection, IP address filtering, Digest authentication, User access log
Network Protocol	SIP, ONVIF, HTTP, IPv4, DHCP, RTSP, RTP, RTCP, TCP, UDP, ARP, FTP, TFTP, NFS, NTP
Network Interface	10/100 Base-TX, RJ45
VoIP	Support SIP protocol for integration with VoIP systems, integrated with SIP/PBX. Support ONVIF protocol for interaction with security systems, integrated with ONVIF VMS/NVR. Support SIP features: secondary/backend SIP server, IPv4 (IPv6). Support codecs: OPUS, G711U, G711A, GSM, MP3, WAV.
Amplifier	
Amplifier Description	Built-in 15W Amplifier
General	
Material	ABS (IP67 waterproof)
Rate Power	15W
Power Supply	PoE or DC 12V
Installation	Wall Mounted
Dimensions	225*165*240mm
Weight	1.4 KG
Languages	English
Warranty	1 year
Package Includes	IP Horn Speaker User Manual

Aristel

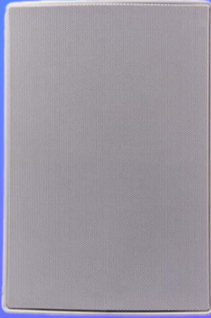
IP Speakers Quick Start Guide

AN-SP11


Aristel



SIP
Compatible with VoIP, SIP devices (IPPBX, IP Phone) via SIP protocol




ONVIF
Compatible with IP Camera VMS via ONVIF protocol




AN-171mc


Aristel




SIP
Compatible with VoIP, SIP devices (IPPBX, IP Phone) via SIP protocol



ONVIF
Compatible with IP Camera VMS via ONVIF protocol







Alarm in / out



Pre - Record



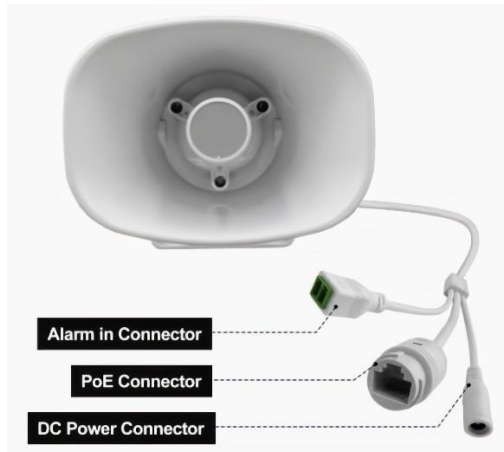
HTTP Control



Schedule

Hardware Interface

The IP Speaker has an Alarm, PoE, and DC Power interface and can be powered by PoE or DC 12V/24V.



Configuration

Option 1: Quick IPTool Setting

- (1) Download IPTool from <https://www.aristel.com.au/downloads>
- (2) Open IPTool and Install Npcap when prompted.
- (3) In the Network tab, choose Realtek PCIe GBE Family Controller 192.168.5.1 or a network that suits the device.
- (4) Use the search tab to connect to your network device/s.
- (3) Start setting your preferences.

Option 2: Complete Web Setting

- (1) Change the IP of the computer to 192.168.5.X network segment.
- (2) Open a browser and type in <http://192.168.5.200>
- (3) Enter the username and password on the Login page.

Default user: admin **Password:** tm1234

(4) Start setting your preferences.

IP SPEAKER

Status	
Basic	Device Time 2024-07-29 03:42:29
	Device ID 50442141A08B6E1C
ONVIF	Firmware Ver CS20-V3.3.36N
	Free Space 3836KB
SIP Account	SIP1 Status NONE
	SIP2 Status NONE
Audio	
Media File	
Alarm	
Schedule	
RTP Multicast	
Firewall	
Auto Provision	
System	

Network	
MAC Address	F8:7A:39:D0:04:DE
IP Address	192.168.2.108
Subnet Mask	255.255.255.0
Gateway	192.168.2.1
Primary DNS	192.168.5.1
Secondary DNS	192.168.2.1

Refresh

Adding IP Speaker to VMS

- (1) Make sure the VMS supports Profile T Audio Backchannel.
- (2) Open IP Speaker web, login ONVIF and save.

Default user: admin **Password:** tm1234

ONVIF	
ONVIF Enable	<input checked="" type="checkbox"/>
User Name	<input type="text" value="admin"/>
Password	<input type="text" value="tm1234"/>

Save

- (3) Open VMS, scan the IP Speaker and press the MIC icon to "Talk" to the speaker. (Note: For the built-in MIC ceiling or horn speaker, it supports monitoring in ONVIF VMS, which means you can hear with the microphone what the speaker hears)