



EHS20 EHS Headset Adapter

EHS20 EHS headset adapter provides the technical interface between Fanvil IP Phones and a compatible Jabra EHS wireless headset. The unit is easy to install via a simple link from the EHS20 to the IP Phone headset port.

EHS20 'plug-and-play' mode gives you direct control of your Fanvil phone, with the ability to answer and hang-up calls remotely. It has been designed specifically to ensure maximum effectiveness in reception areas, call-centers and general telephone use.

Highlights

- With the EHS-enabled phone, it can support the connection of Jabra EHS wireless headset.
- Phone control through a wireless headset
- Easy to use
- Plug and Play

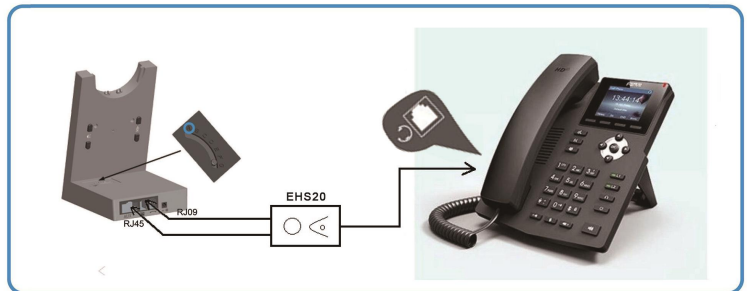


Product Specifications

- Hear ring tones
- Answer calls
- End calls
- Mute the microphone
- Interface: 2x RJ9, 1x RJ45
- Working Temperature: 0~40℃
- Working Humidity: 10~85%
- Color: Black

Packaging information

- Outer CTN Dimensions: 570 x 350 x 160mm
- QTY/CTN: 125 PCS
- N.W/CTN: 6.5 kg
- G.W/CTN: 7.18 kg



The above specifications may be updated in the future without prior notice. All hardware/software/physical features should be based on the final shipped products. For more information, please visit: www.fanvil.com

