

Introducing LINKVIL Cordless Multi-cell System



W710H

W610H

Contents

01

System Introduction

02

Highlights

03

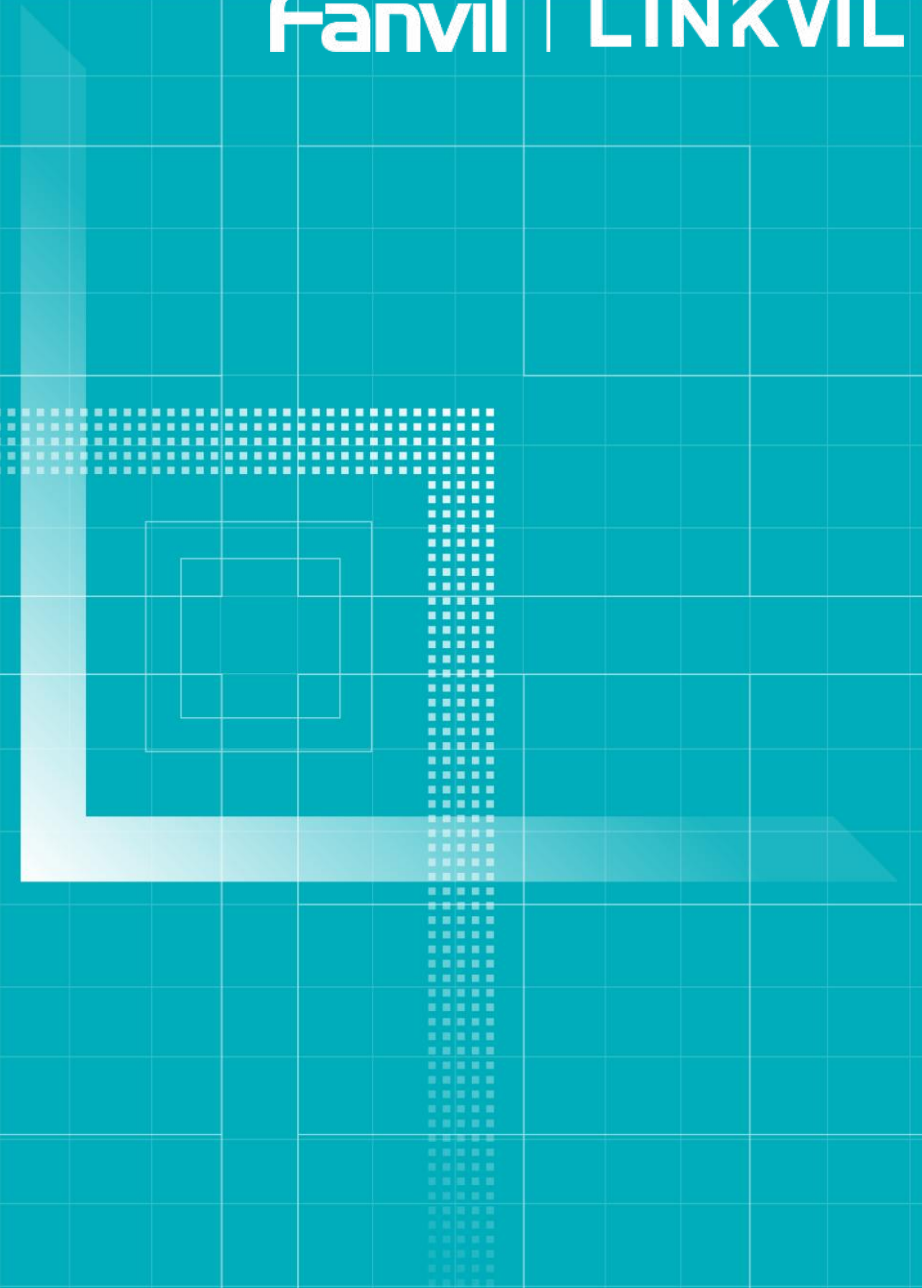
Application Scenarios

04

Q&A

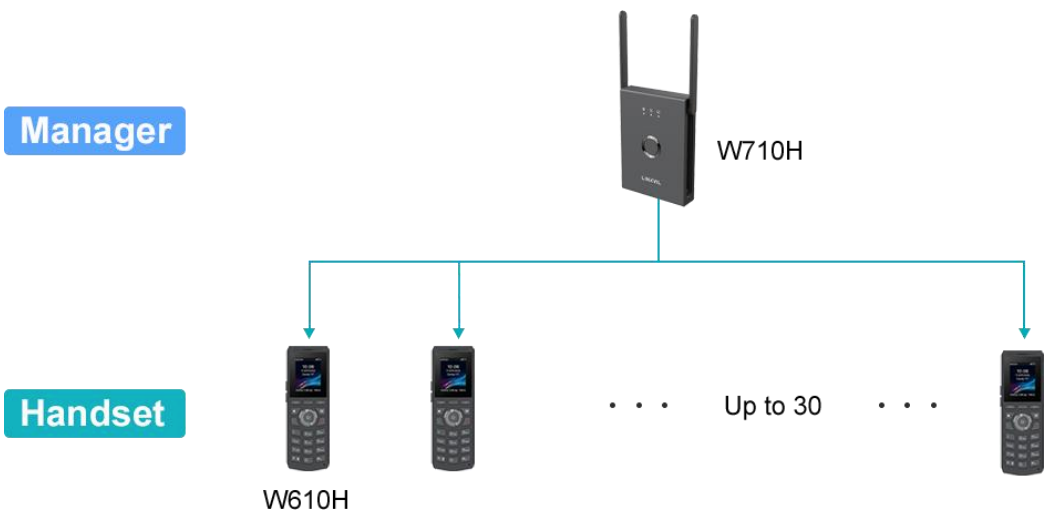
PART 01

System Introduction

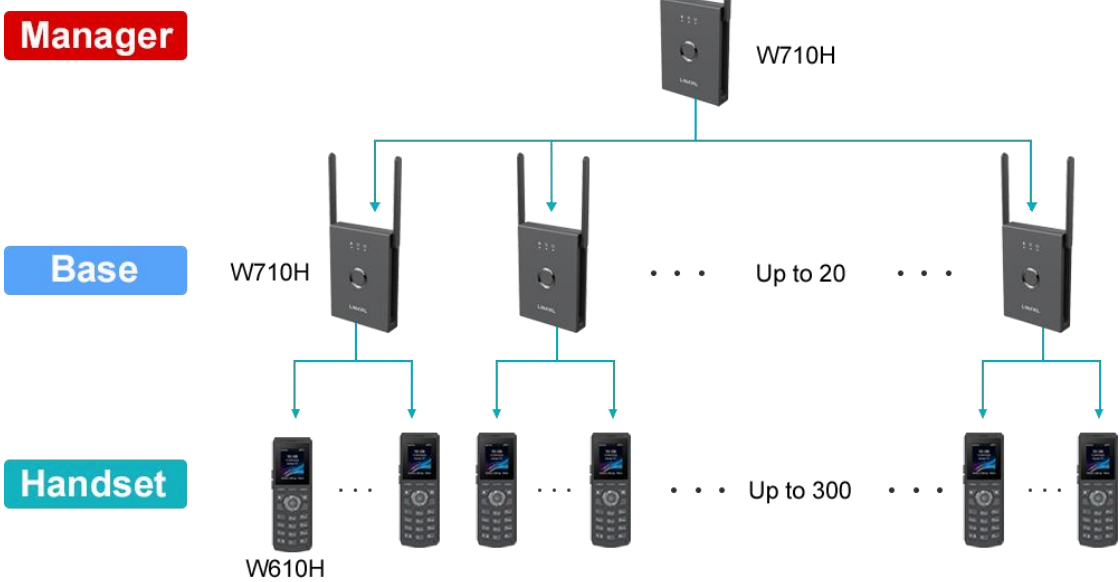


LINKVIL Cordless Multi-cell System is a roaming communication solution.

Single-Cell System



Multi-Cell System



W610H Handset

Screen	2" 240*200 color screen
Backlight	√
SIP SIP line	4 SIP lines
Internal extension	1
Indicator light	Dual color indicator light
Side key	1
Dsskey	16(8*2)
Broadband Voice code	Opus, G.722
Audio conference	3 party audio conference
Local phone book	1000
Bluetooth	√
Incoming vibration	support
headset	3.5mm, four pole jack
battery	1900mAh
Call time	8 h
Standby time	160 h
Safe drop height	1.8 m
Belt clamp	√



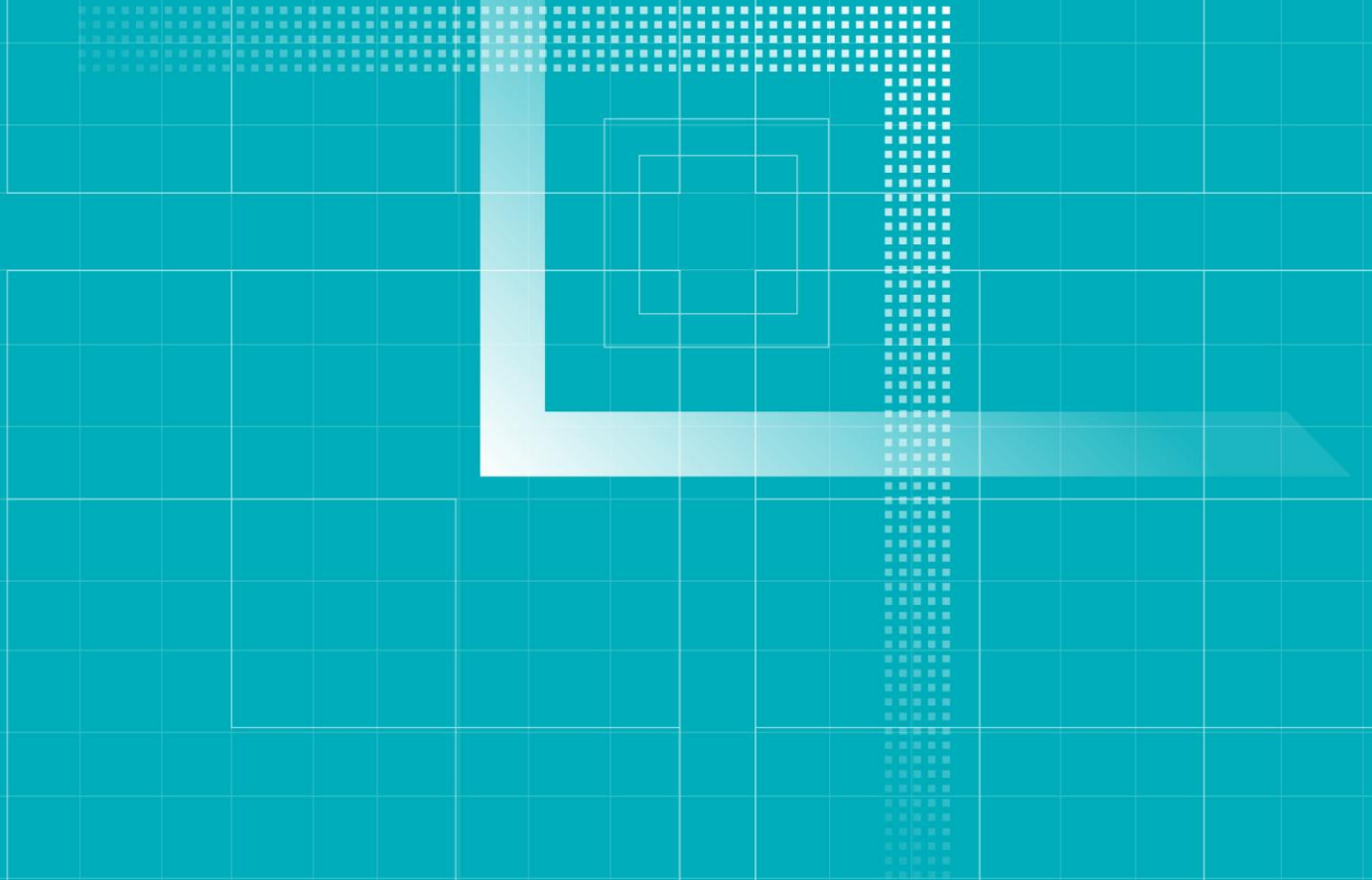
W710H Multi-cell Base



Number of Connecting Bases	20
Number of Connecting handsets	300
Number of Handsets Per Base	30
Simultaneous Calls	200
Simultaneous Calls Per Base	16
Signal Range	Indoor: 100m(US) Outdoor: 700m(US)
Local Phonebook	1000
SIP Account	300
Call Log	20000
Roaming	Support
IPv6	√
Source	DC / PoE
Network	Dual 10/100Mbps
Installation Method	Desktop/wall mounted

PART 02

Highlights



Highlights

Fanvil | **LINKVIL**

Seamless Roaming
with Long-Range
Coverage

1 PTT Key
16 DSS Keys

Intelligent Noise
Reduction & Acoustic
Shield

High Performance



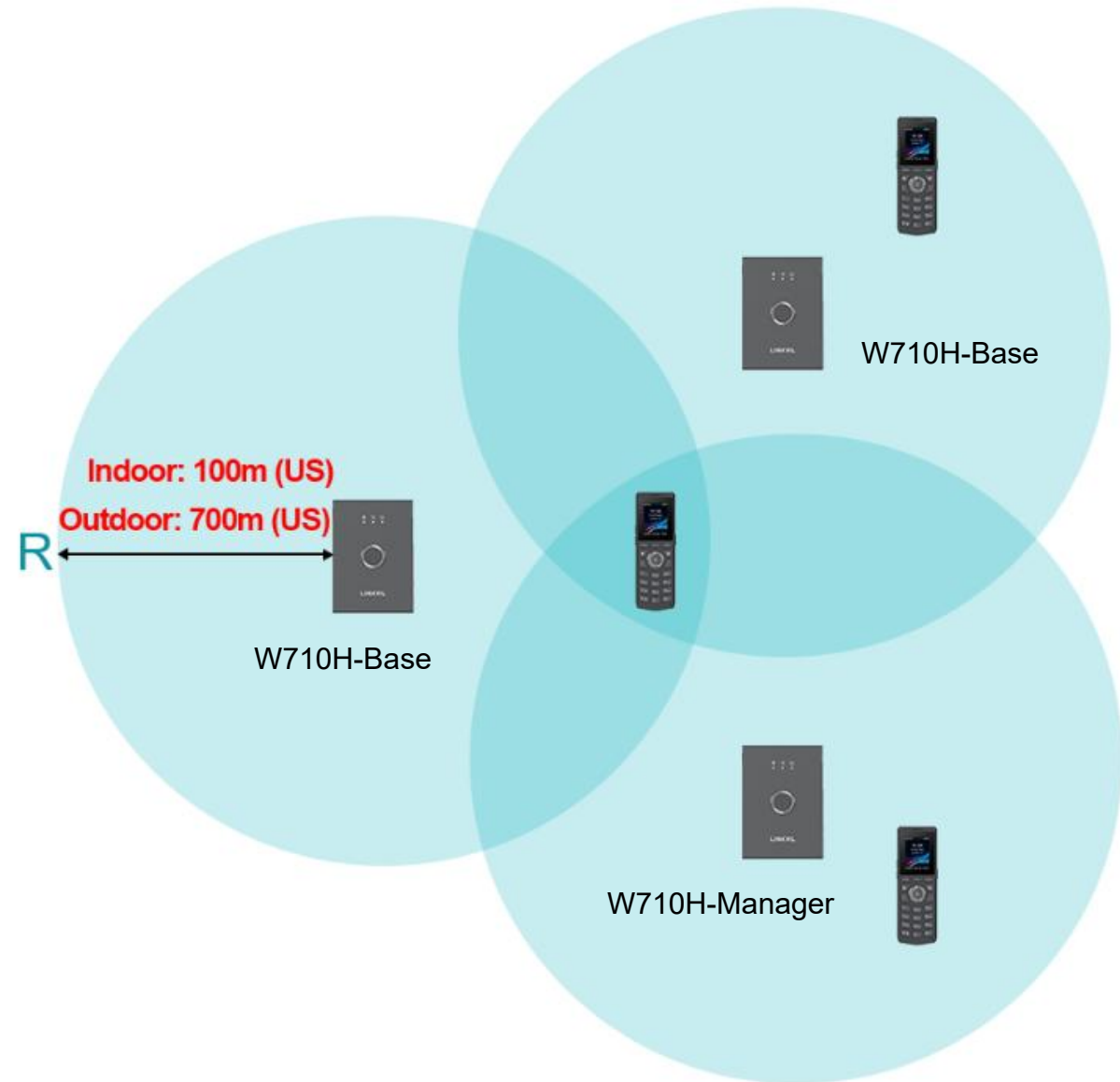
Scalable and High-
Capacity Call

Large Capacity
Phonebook

Short Message
Service

Easy Deployment

- Move freely between base stations
- Enjoy uninterrupted roaming
- Enjoy seamless call switching



Scalable and High-Capacity Call

Fanvil | **LINKVIL**

Multi-Cell Mode

UP
TO **20** LINKVIL
W710H Base Stations

UP
TO **300** LINKVIL
W610H Handsets

UP
TO **200** LINKVIL
Simultaneous Calls

Single-Cell Mode

UP
TO **30** LINKVIL
W610H Handsets

UP
TO **16** LINKVIL
Simultaneous Calls



Frequency Band: US: 902-928MHz

*Tested under ideal conditions

PTT (Push-to-Talk) Key, DSS Key



- Quickly establish communication through one click operation
- Can also be set to other types of keys, such as Intercom, DND, Voice Messaging, etc.



Supports 16 (8*2) virtual DSS keys, which can be configured as speed dial, voice mail, DND, BLF.



1000 Local Contacts

Loading time is only required when importing contacts for the first time; subsequent access requires no waiting.

Restricted/Allowed Incoming List

Support Restricted/Allowed Incoming List to protect user privacy and avoid interference.

Intelligent Noise Reduction & Acoustic Shield

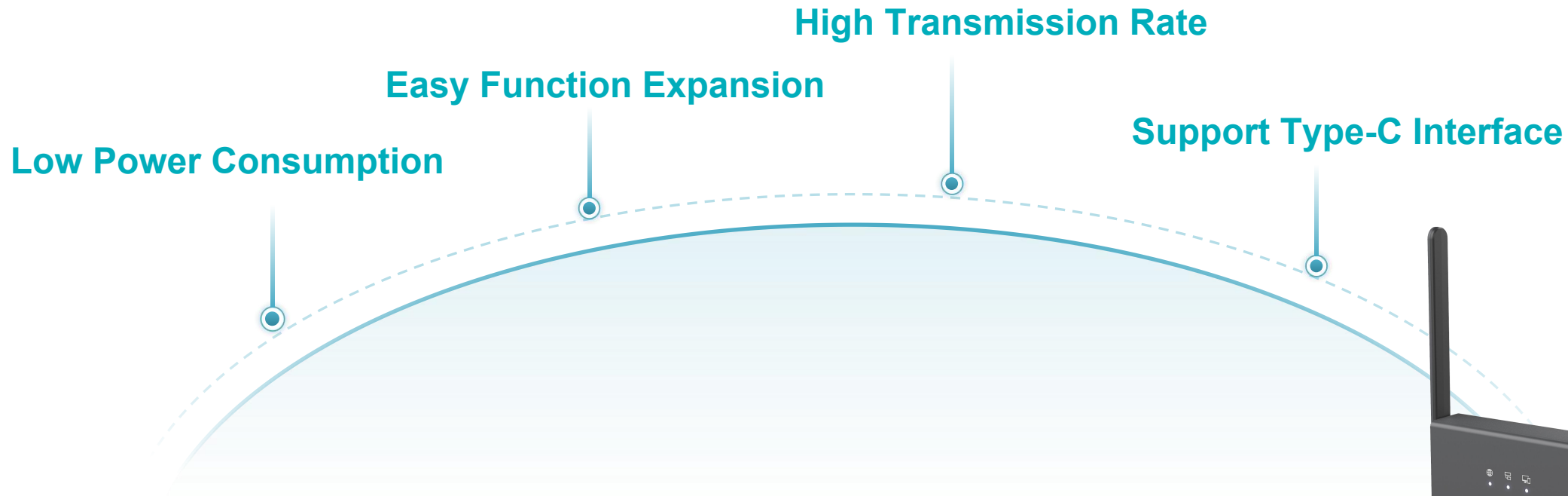
Fanvil | LINKVIL



Support SMS via SIP account or internal extension

- Send help messages in emergency situations
- Task reminder
- Convenient communication





CPU	ARM Cortex-A7 Dual Core up to 1GHz
OS	Linux



Easy Deployment

- Automatically obtains extension number and Internal extension phonebook upon connection
- Support Signal Measurement
- Import device and SIP account list in batches



One-Click Authorization Management

No web login or MAC address entry required, simply enable authorization on the base station to enable seamless Handset Registration.

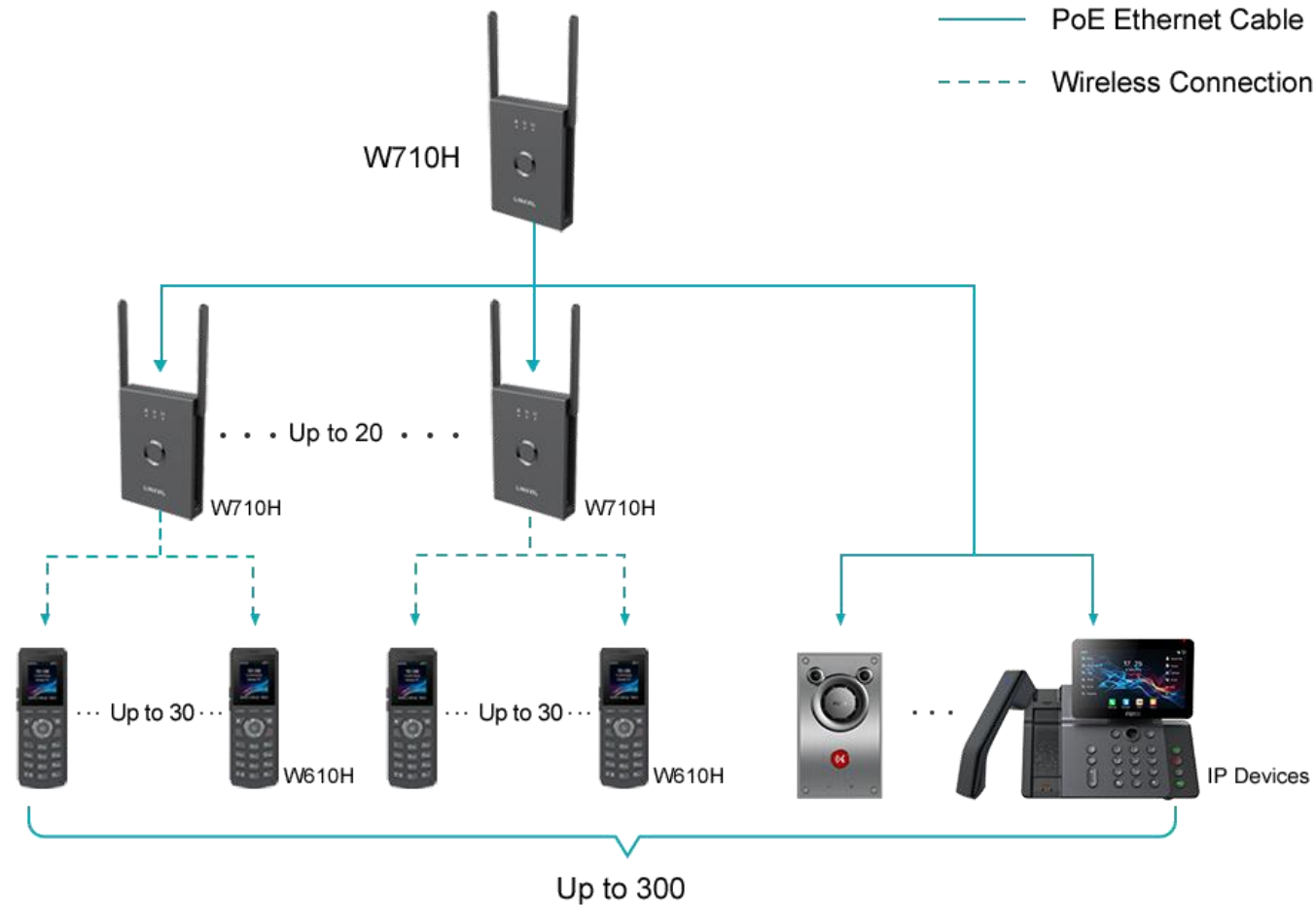


Support Fanvil IP Devices

Manager

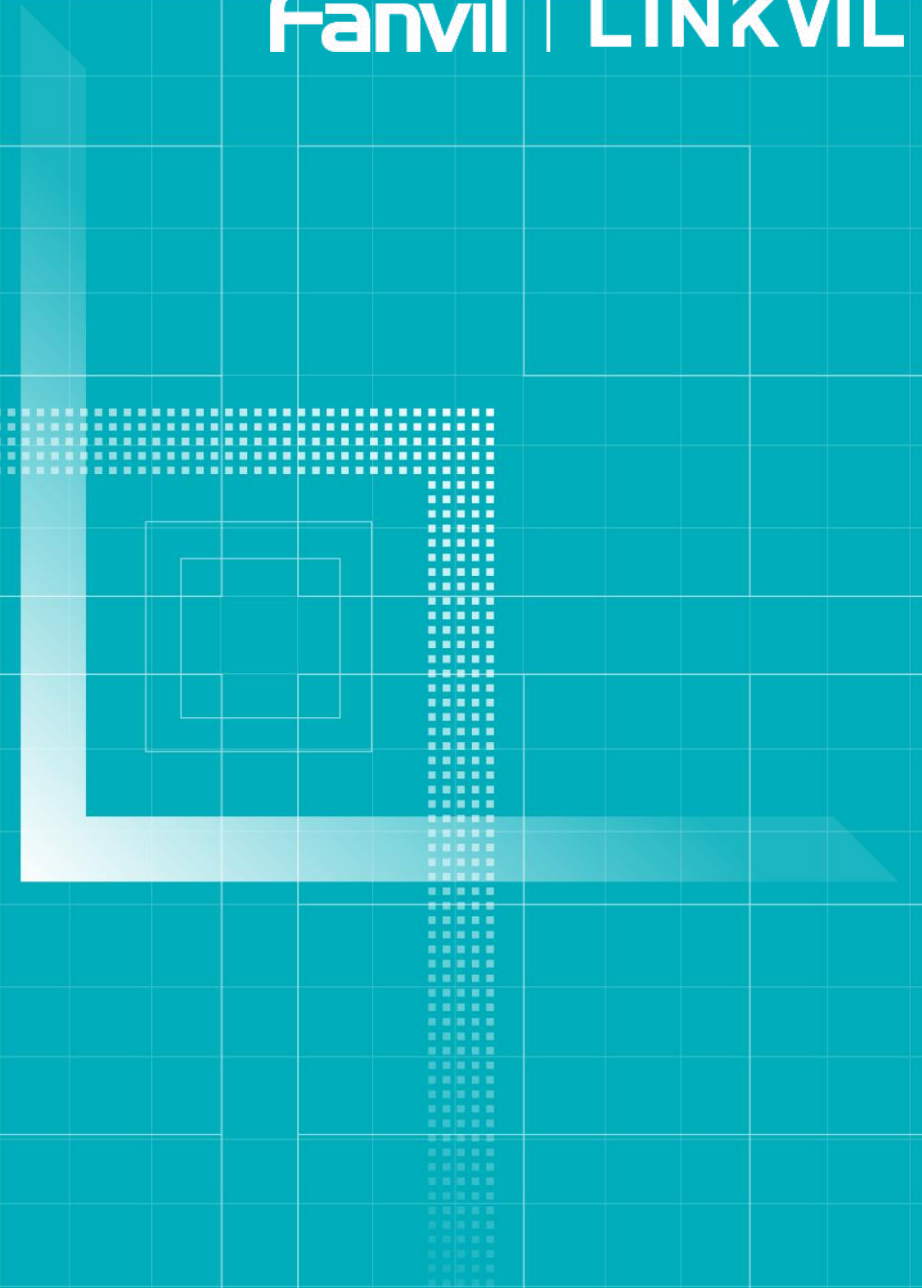
Base

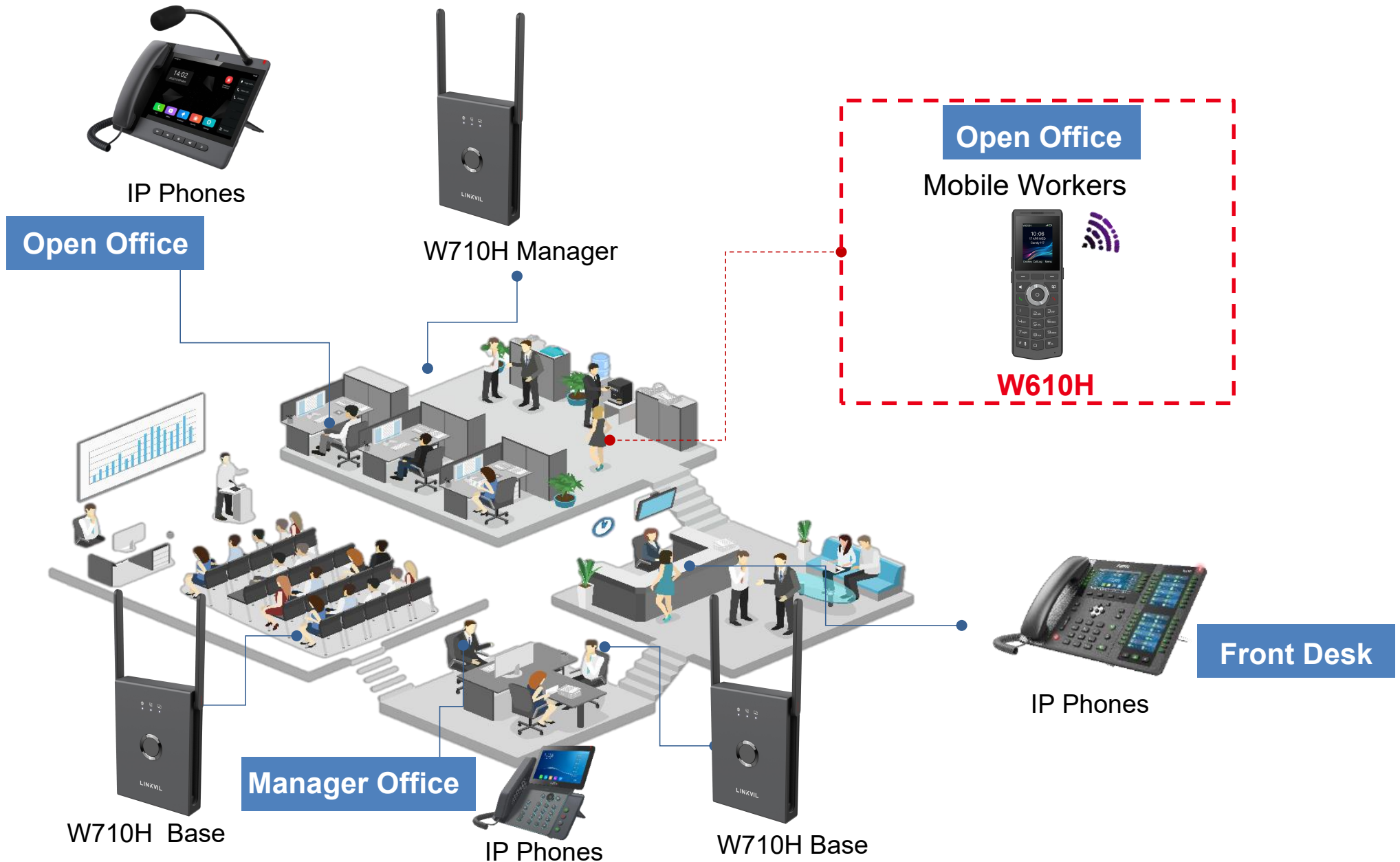
Terminal



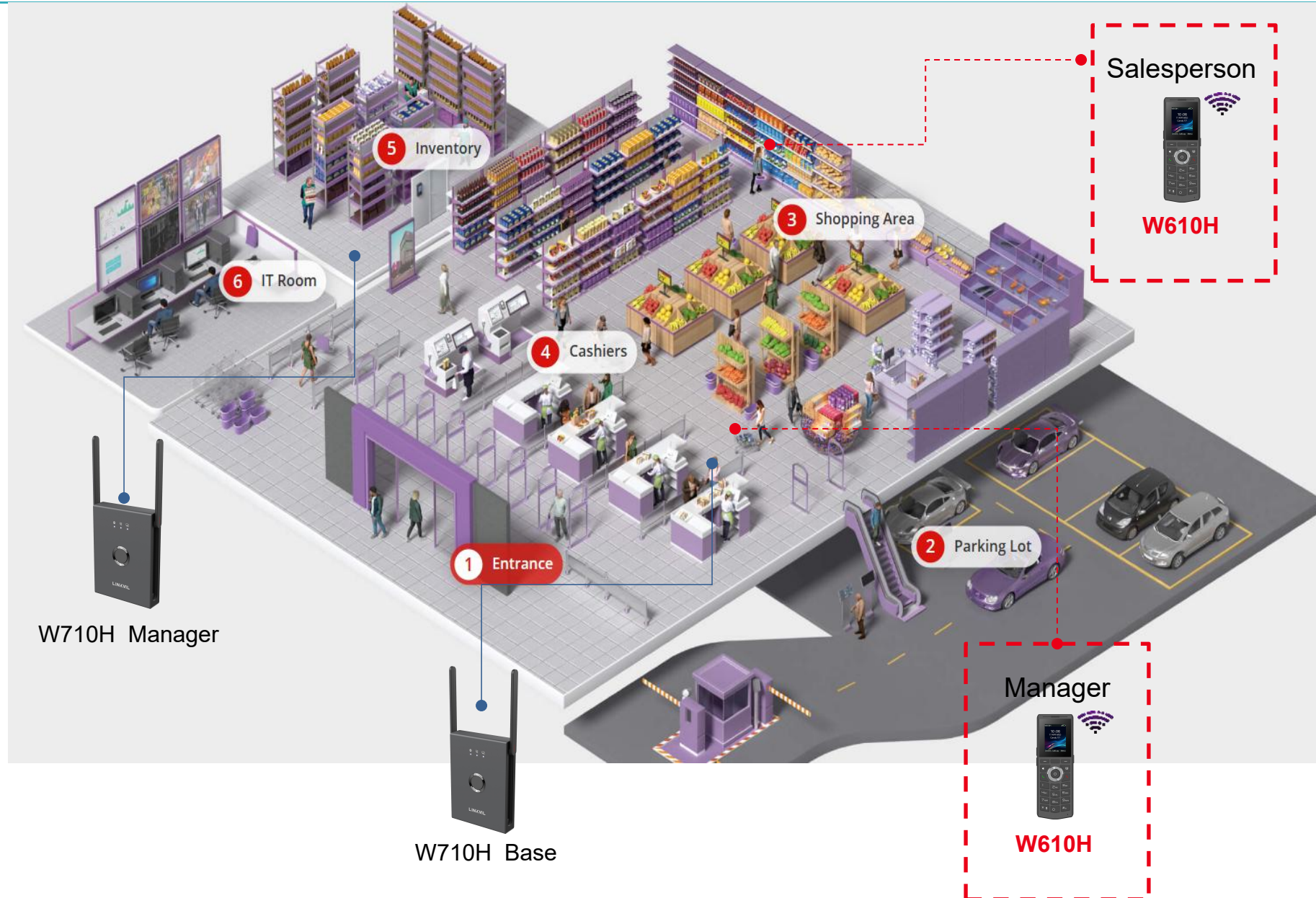
PART 03

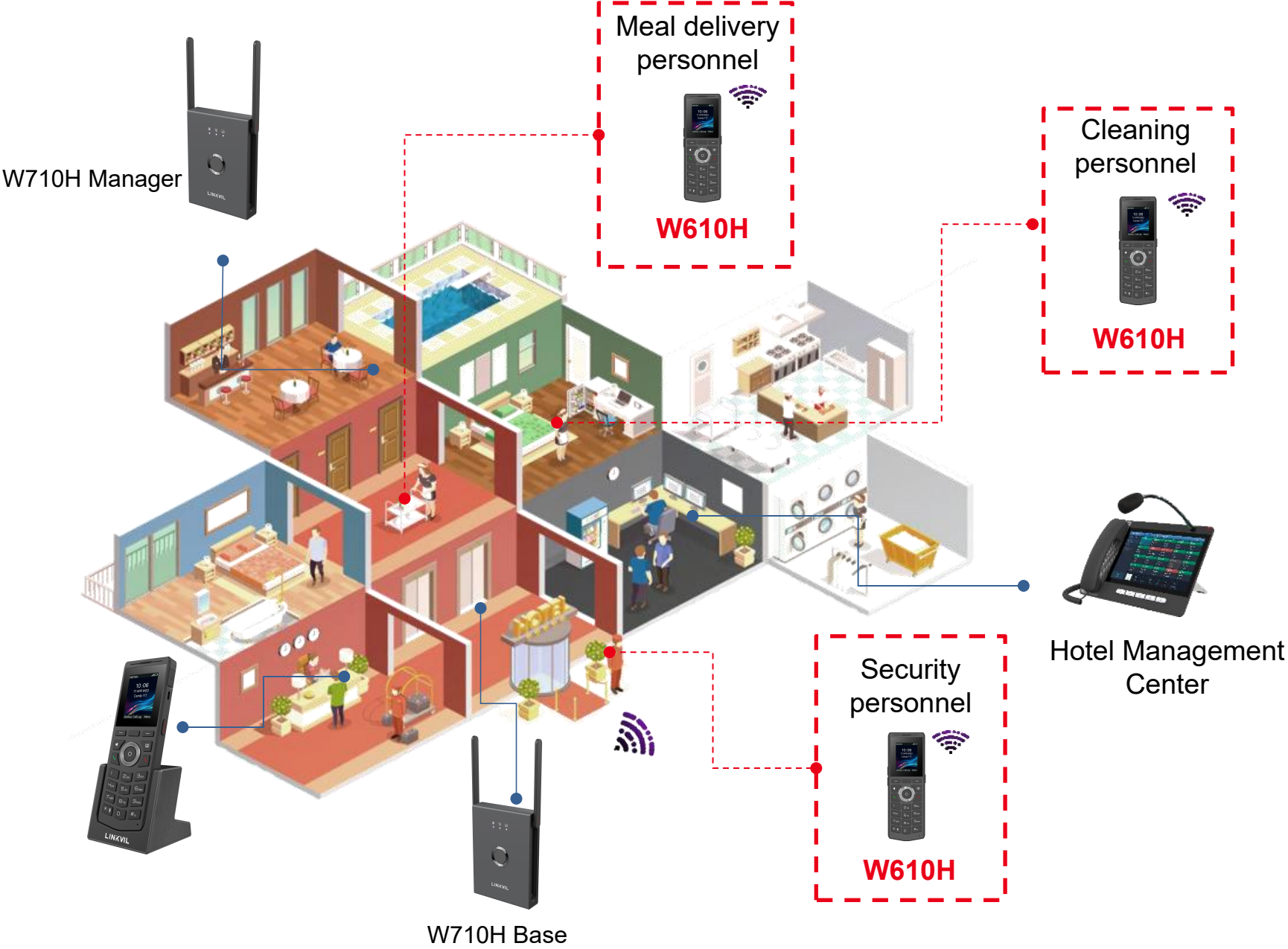
Application Scenarios

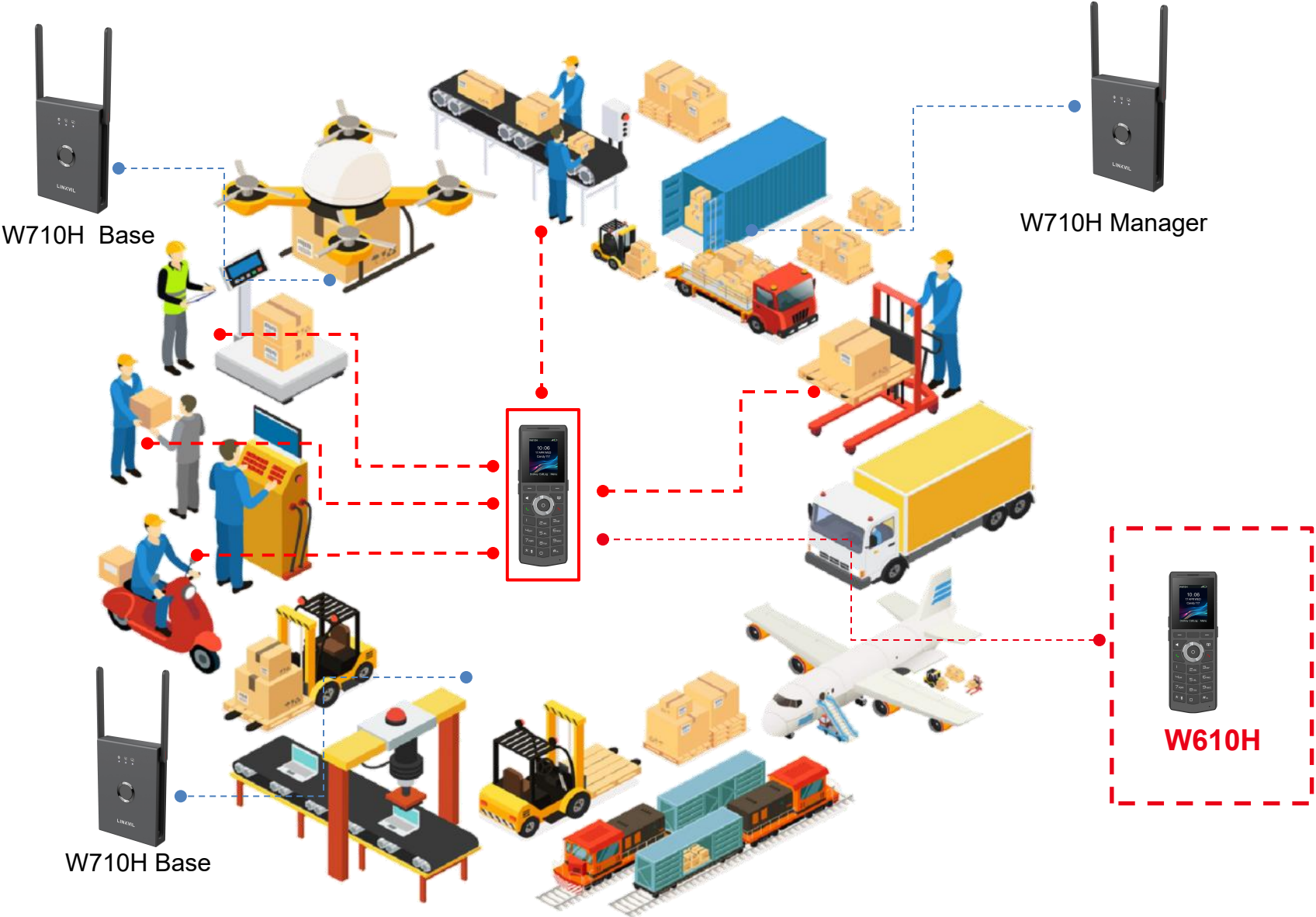




Chain Supermarkets

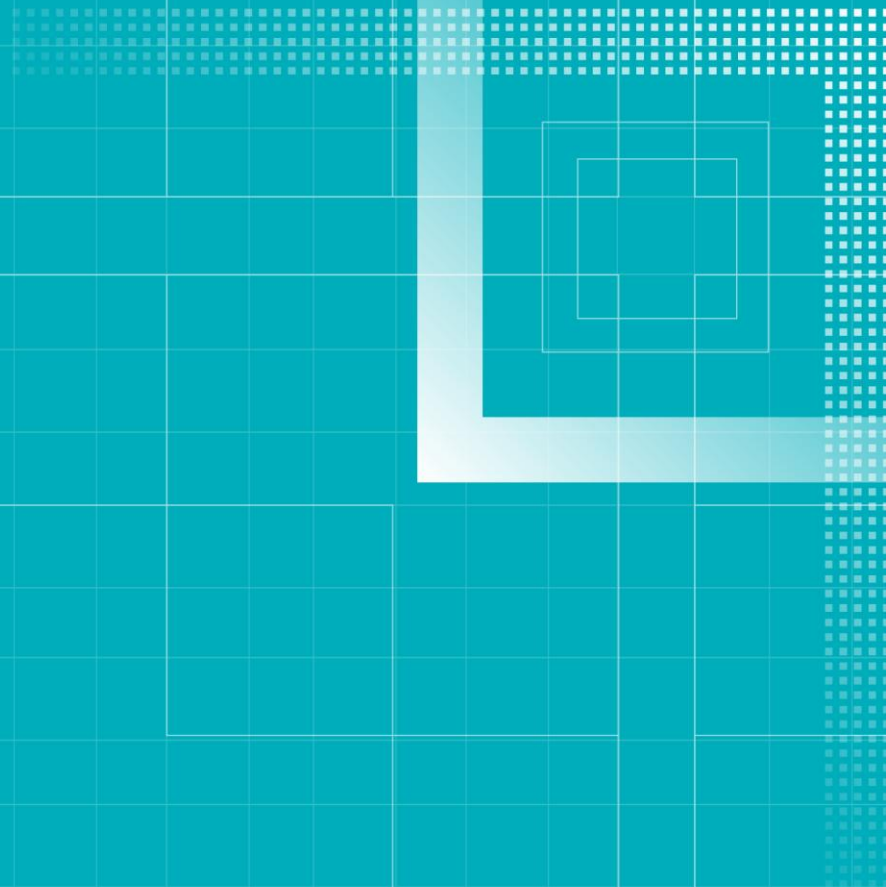






PART 04

Q&A



THANKS



@Fanvil



@FanvilOfficial



@FanvilOfficial



+86-755-2640-2199



www.fanvil.com



@Fanvil